

# 40-450 Watt

High efficiency monocrystalline silicon solar modules

0~+3% tolerance

ISO9001:2008, ISO14001:2004, OHSAS18001

Factory certificates

IEC61215, IEC61730, UL1703 Product certificates

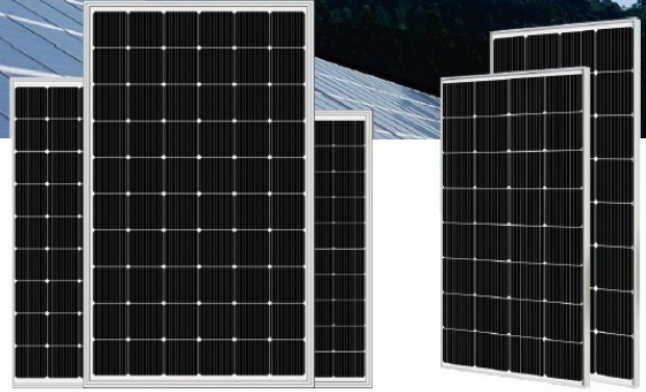


# TRISOL<sup>®</sup>



182 Cell 450W

## SP160M-32



## Solar module features



### PERC 182 cells

Better capability of current collection, larger area of power generation, nice appearance, more suitable for installation on the roof.



### High output power

Using PERC battery structure technology (Low resistance characteristics), output power of 60pcs monocrystalline cells reaches Max 450W (Highest Conversion efficiency to 20.9%)



### Low light performance

Using excellent glass and texture surface making of solar cell, outstanding performance can be obtained in low light condition.

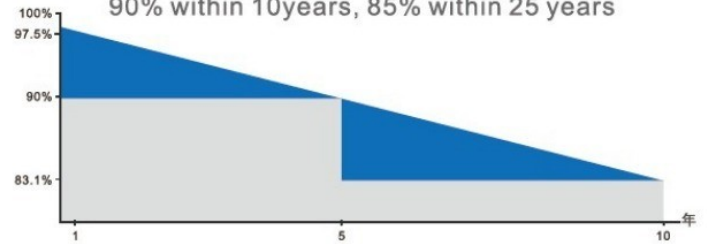


### Adaptability of harsh environment

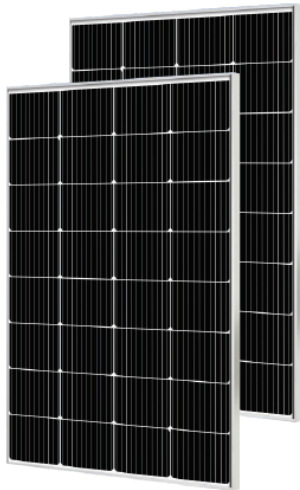
Corrosion tests have certified in high salt fog and high ammonia environment.

## Guaranteed output power

90% within 10 years, 85% within 25 years



## Module Picture



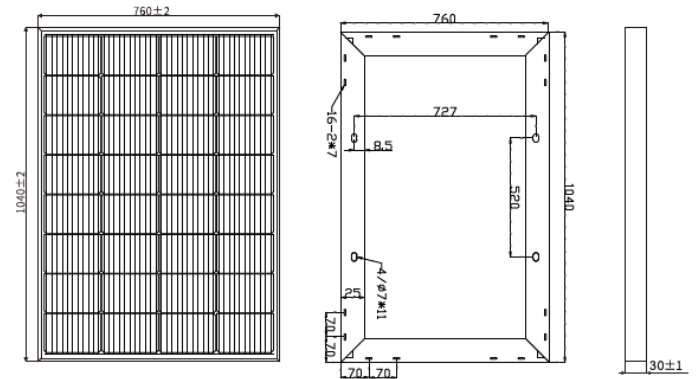
## SP160M-32

### Comprehensive Certificates

- IEC61215, IEC61730
- ISO9001:2015 Quality management systems
- ISO45001:Environmental management systems
- ISO45001:2018 Occupational health and safety management systems



## Mechanical Diagrams

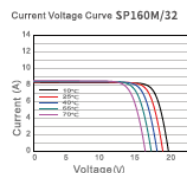
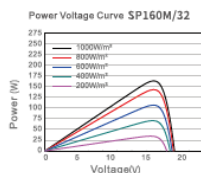
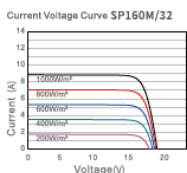


PS: Frame color and cable length can be customized

## Electrical Parameters at (STC)

Module	Power (W)	Module Efficiency(%)	Voltage at Pmax(Vmp)	Current at Pmax(Imp)	Open Circuit Voltage(Voc)	Short Circuit Current(Isc)	Power Tolerance(w)
SP160M	160W	20.20%	18.24	8.77	21.80	9.30	±3%

## Characteristics



## Mechanical Parameters

Solar Cell(Type/Size)	MONO(182mm)
Solar Cells Number	32Pcs(4x8)
Dimension	1040x760x30mm
Weight	8.30Kg/Pcs
Tempered Glass	3.2 mm High Permeability Coated
Frame	Anodized aluminum alloy
Junction Box	IP67, 2*bypass diode
Cable	2.5mm <sup>2</sup> , (-)700mm/(-)700mm
Connector	Original MC4/Compatible MC4
Mechanical Load	Front 5400PA/back 2400PA

## Packing

Module Type	SP160M-32
Carton Size	1060x780x75mm
Number	2Pcs/Ctn
Weight	17Kg/Ctn
Volume	0.062Cbm/Ctn
20GP Container	984Pcs
40HQ Container	2280Pcs

STC: Light Intensity 1000W/m<sup>2</sup> Battery temperature: 25°C atmosphere quality=15

NOCT: Light Intensity 800W/m<sup>2</sup> Battery temperature: 20°C atmosphere quality=15 wind velocity 1m/s